



**FRONT** Should include fairing, headlight, windshield, fender



**LEFT SIDE** Should show entire length of vehicle



**RIGHT SIDE** Should show entire length of vehicle



**REAR** Should include taillight, fender, signals, pipes, plate



**FRONT TIRE** Close-up view of tire, tread depth, edges



**REAR TIRE** Close-up view of tire, tread depth, edges



**SEAT** Close-up of seat vinyl and overall condition



**COCKPIT** Should include bars, windshield, mirrors, gauge



**GAUGE** Close-up of gauge view with miles/hours (while running)



**VIN** Close-up of actual vehicle VIN stamped on headstock



**TITLE/REGISTRATION/M.S.O.**  
Entire page of ownership doc

**ACCESSORIES:** Please include detailed photos of all accessories or modifications to your vehicle for valuation.  
**DAMAGE:** Please include detailed photos of any scratches, dents, or other damage to your vehicle.



**FRONT** Should include grille, fairings, headlights, windshield



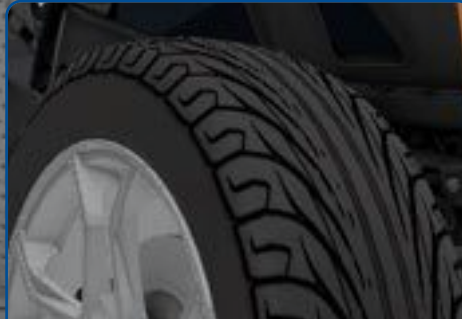
**LEFT SIDE** Should show entire length of vehicle



**RIGHT SIDE** Should show entire length of vehicle



**REAR** Should include taillights, rear wheel, plate



**FRONT TIRE** Close-up view of tire, tread depth, edges



**REAR TIRE** Close-up view of tire, tread depth, edges



**DRIVER SEAT** Close-up of seat vinyl and overall condition



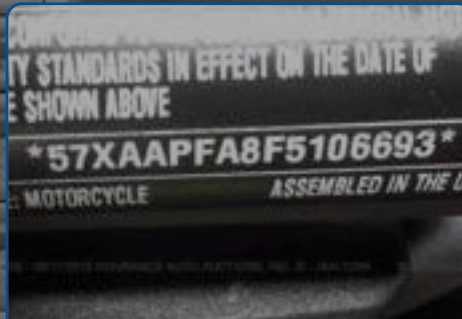
**PASSENGER SEAT** Close-up of seat vinyl and overall condition



**COCKPIT** Should include wheel, windshield, console, gauge



**GAUGE** Close-up of gauge view with miles/hours (while running)



**VIN** Close-up of actual vehicle VIN stamp on dash or sticker



**TITLE/REGISTRATION/M.S.O.**  
Entire page of ownership doc

**ACCESSORIES:** Please include detailed photos of all accessories or modifications to your vehicle for valuation.

**DAMAGE:** Please include detailed photos of any scratches, dents, or other damage to your vehicle.





**FRONT** Should include grille, headlights, windshield, hood



**LEFT SIDE** Should show entire length of vehicle



**RIGHT SIDE** Should show entire length of vehicle



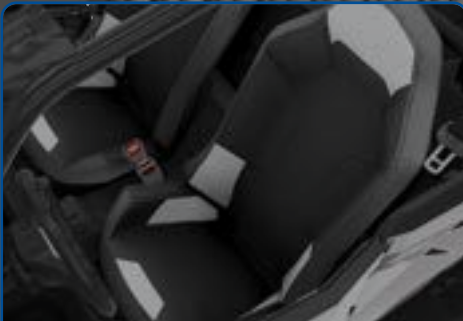
**REAR** Should include taillights, suspension, A-arms



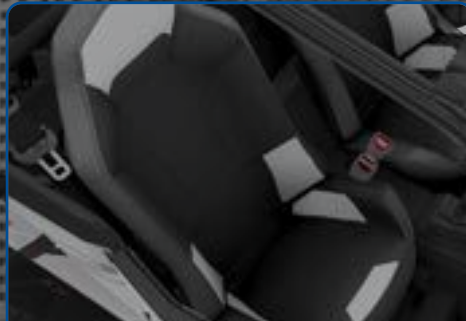
**FRONT TIRE** Close-up view of tire, tread depth, edges



**REAR TIRE** Close-up view of tire, tread depth, edges



**DRIVER SEAT** Close-up of seat vinyl and overall condition



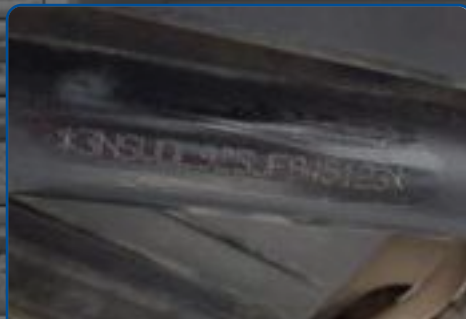
**PASSENGER SEAT** Close-up of seat vinyl and overall condition



**COCKPIT** Should include wheel, console, gauge



**GAUGE** Close-up of gauge view with miles/hours (while running)



**VIN** Close-up of actual vehicle VIN stamp on frame tubing



**TITLE/REGISTRATION/M.S.O.** Entire page of ownership doc

**ACCESSORIES:** Please include detailed photos of all accessories or aftermarket modifications to your vehicle.

**DAMAGE:** Please include detailed photos of any scratches, dents, or other damage to your vehicle.



**FRONT** Should include grille, headlights, windshield, hood



**LEFT SIDE** Should show entire length of vehicle



**RIGHT SIDE** Should show entire length of vehicle



**REAR** Should include taillights, suspension, A-arms



**FRONT TIRE** Close-up view of tire, tread depth, edges



**REAR TIRE** Close-up view of tire, tread depth, edges



**SEATS** Close-up of seat vinyl and overall condition



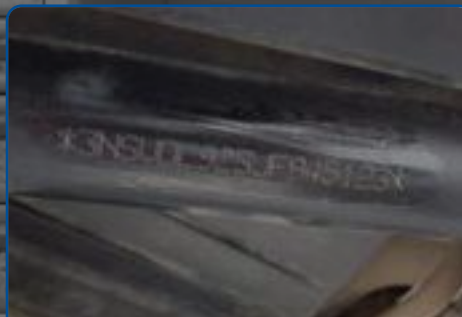
**BED** Should show interior of cargo bed and tailgate



**COCKPIT** Should include wheel, console, gauge



**GAUGE** Close-up of gauge view with miles/hours (while running)



**VIN** Close-up of actual vehicle VIN stamp on frame tubing



**TITLE/REGISTRATION/M.S.O.**  
Entire page of ownership doc

**ACCESSORIES:** Please include detailed photos of all accessories or modifications to your vehicle for valuation.  
**DAMAGE:** Please include detailed photos of any scratches, dents, or other damage to your vehicle.





**FRONT** Should include grille, fairing, headlights, A-arms



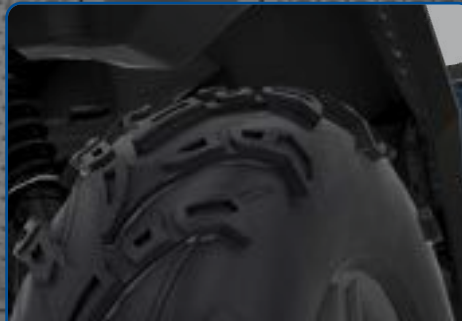
**LEFT SIDE** Should show entire length of vehicle



**RIGHT SIDE** Should show entire length of vehicle



**REAR** Should include taillights, rear suspension, A-arms



**FRONT TIRE** Close-up view of tire, tread depth, edges



**REAR TIRE** Close-up view of tire, tread depth, edges



**DRIVER SEAT** Close-up of seat vinyl and overall condition



**COCKPIT** Should include bars, console, gauge



**GAUGE** Close-up of gauge view with miles/hours (while running)



**VIN** Close-up of actual vehicle VIN stamp on dash or sticker



**TITLE/REGISTRATION/M.S.O.**  
Entire page of ownership doc

**ACCESSORIES:** Please include detailed photos of all accessories or modifications to your vehicle for valuation.  
**DAMAGE:** Please include detailed photos of any scratches, dents, or other damage to your vehicle.



**FRONT** Should include belly pan, headlights, windshield, bars



**LEFT SIDE** Should show entire length of vehicle



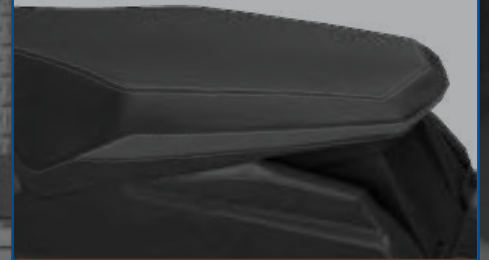
**RIGHT SIDE** Should show entire length of vehicle.



**REAR** Should include taillight, snowflap, track, seat



**TRACK** Close-up view of lugs, paddles and track edges



**SEAT** Close-up of seat vinyl and overall condition



**COCKPIT** Should include bars, console, windshield, gauge



**GAUGE** Close-up of gauge view with miles/hours (while running)



**VIN** Close-up of actual vehicle VIN stamp on tunnel or sticker



**TITLE/REGISTRATION/M.S.O.**  
Entire page of ownership doc

**ACCESSORIES:** Please include detailed photos of all accessories or modifications to your vehicle for valuation.  
**DAMAGE:** Please include detailed photos of any scratches, dents, or other damage to your vehicle.